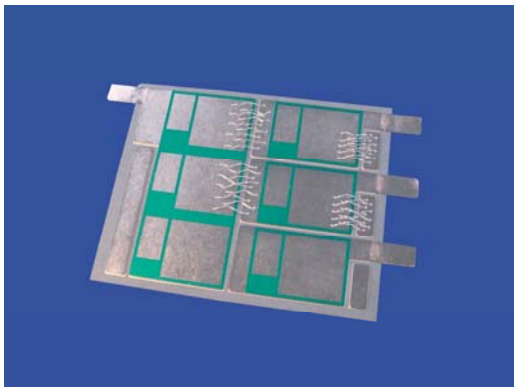


Inverter / Converter Ceramic Substrate

NEW!

High Flexural Strength Substrate Enables
High Reliability Inverter / Converter Modules

Product



Features

- High Flexural Strength: **850MPa**
Conventional Alumina : **400-460MPa**
Alumina Nitride : **400MPa**
- High Reliability Substrate
- Low Inductance Structure Available
- Low Thermal Resistance

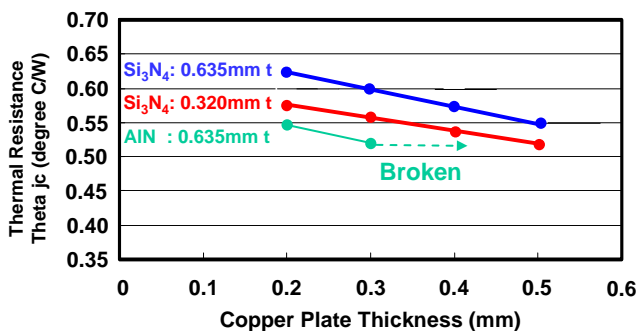
Reliability Test Result

Kyocera Test Condition

Test Method	: Temperature Cycling Test
Test Condition	: - 60 to +175 degree C
Substrate Size	: 50.8x38.1x0.32
Copper Thickness	: 0.3mm t (Top Side) 0.2mm t (Bottom Side)
Result	: 5,000 Cycles Passed

Thermal Resistance Comparison

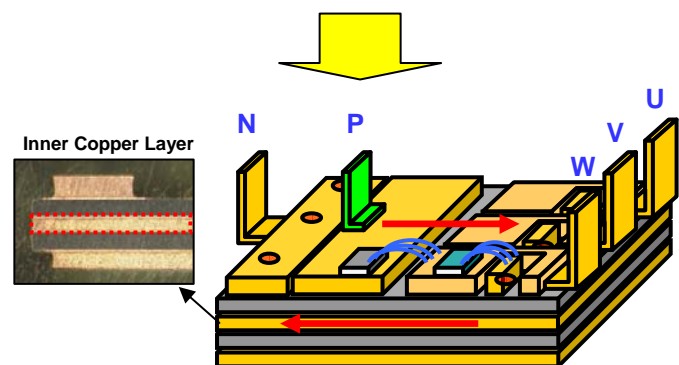
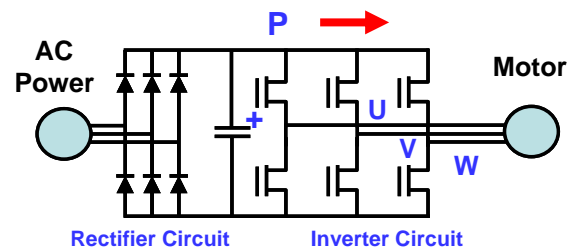
Comparison with Alumina Nitride



As for simulation method and condition please ask to Kyocera staff or website

Low Inductance Structure

Inverter Block Diagram



Copper layer of Negative side placed inside the substrate realizes low inductance structure